



Convergence Edition

Device Management + Data Platform + Data Spaces + Digital Twin + Citiverse

PABLO GARCÍA – Platform Engineer

DANIEL SANZ – Business Development

No limits! Just data!

Datacracy made easy

iris360

An **infinite space** of
possibilities
that allows you to get the
most out of data.

Iris360 Convergence is open for business.

No limits, just data!

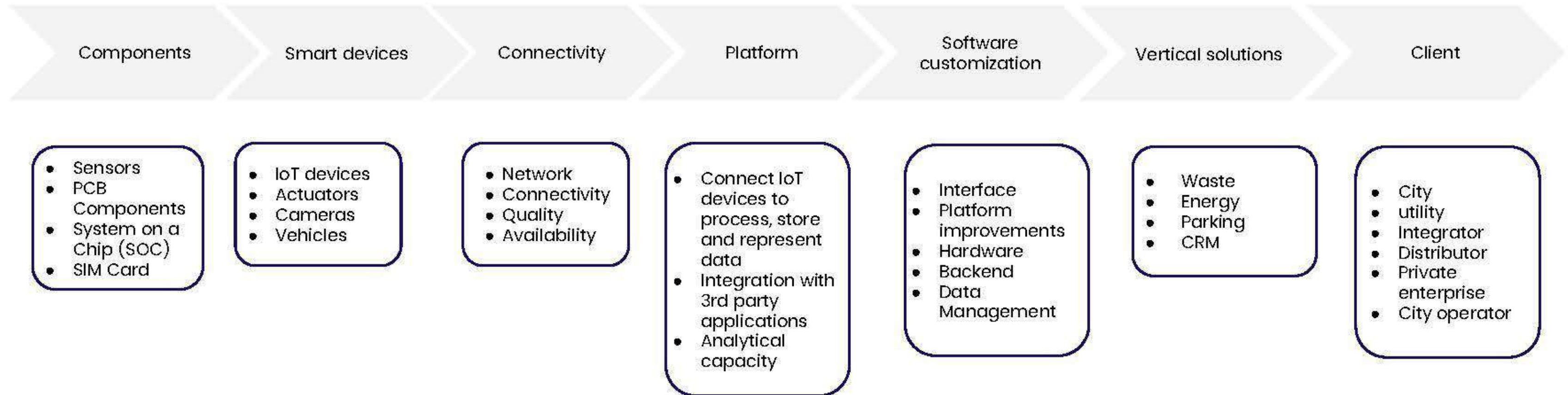
Behind the Change (*current roadmap*):

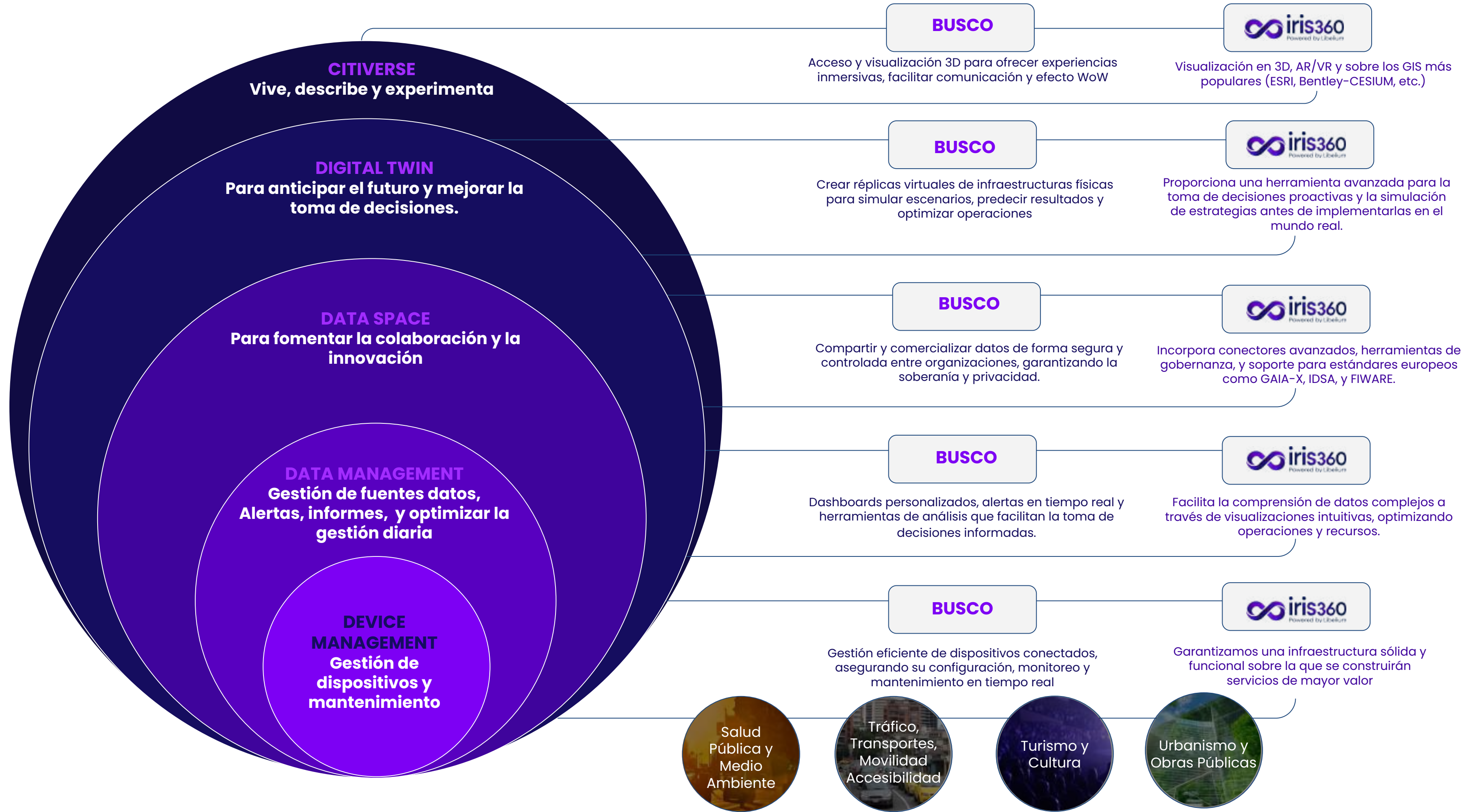
- ✓ Device Management
- ✓ Data Platform
- ✓ Data Spaces
- ✓ Digital Twin
- ✓ Citiverse

Beyond the challenge (*tomorrow opportunities*):

- ✓ Cybersecurity
- ✓ Geospatial Technologies

Libelium en toda la cadena de valor del dato





Modular and flexible Dataspace

No Limits, Just data!



Urban Health:

Air & Noise monitoring



Urban Mobility

Parking, Digital Signaling



Water

City Parks and Green Areas



Crowd

Monitoring



Smart Tourism Solutions



Smart Buildings



Digital twins/Metaverse Experience



End User Services

Features



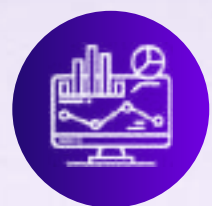
Semantic Vision

Data-centric architecture with semantic vision to build business models



Data Integration for IoT and non IoT Protocols

Intake of information from heterogeneous sources and protocols



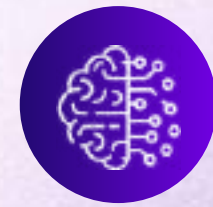
Data Integration & Data Normalization

Events managements through orchestration of actions



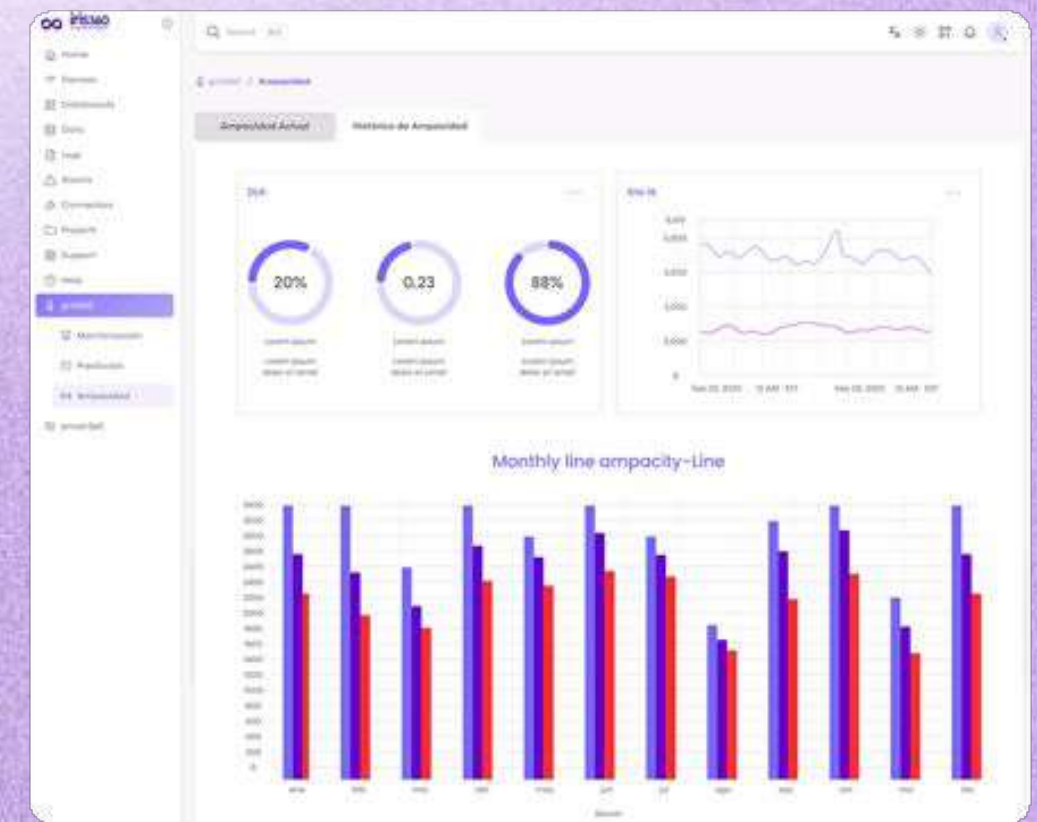
Analytics & Intelligence

Business decision-making

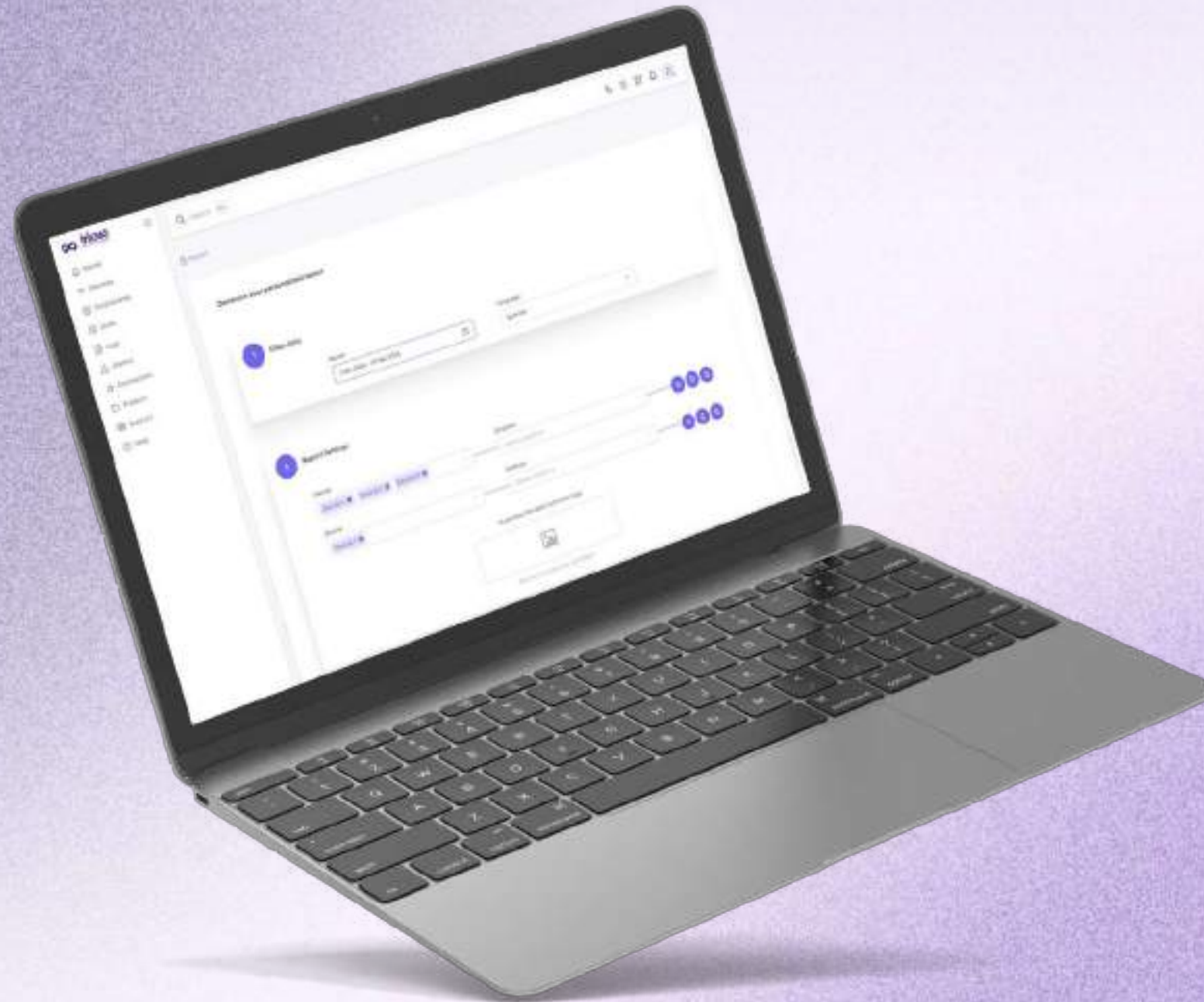


AI on Demand

Flexibility for visually analytical or real-time dashboards



Features



Data Spaces Connectors

Publishing data datasets for use and integration by third parties



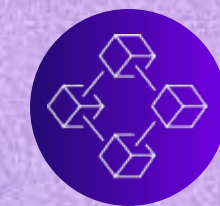
Integrated Security

Securitization of components and functions to prevent cyberattacks



Hybrid deployment

Automate deployments
Hybrid System Deployment Model: Cloud and On-premises



Devices management

Tools to manage devices, connection, and workloads.

Reports

Datacracy made easy

Data Accuracy



CERTIFIED REPORTING

Validation of accurate contextual data represented & elaboration of issue status reports

Compliance



ALIGNMENT WITH EUROPEAN DIRECTIVES

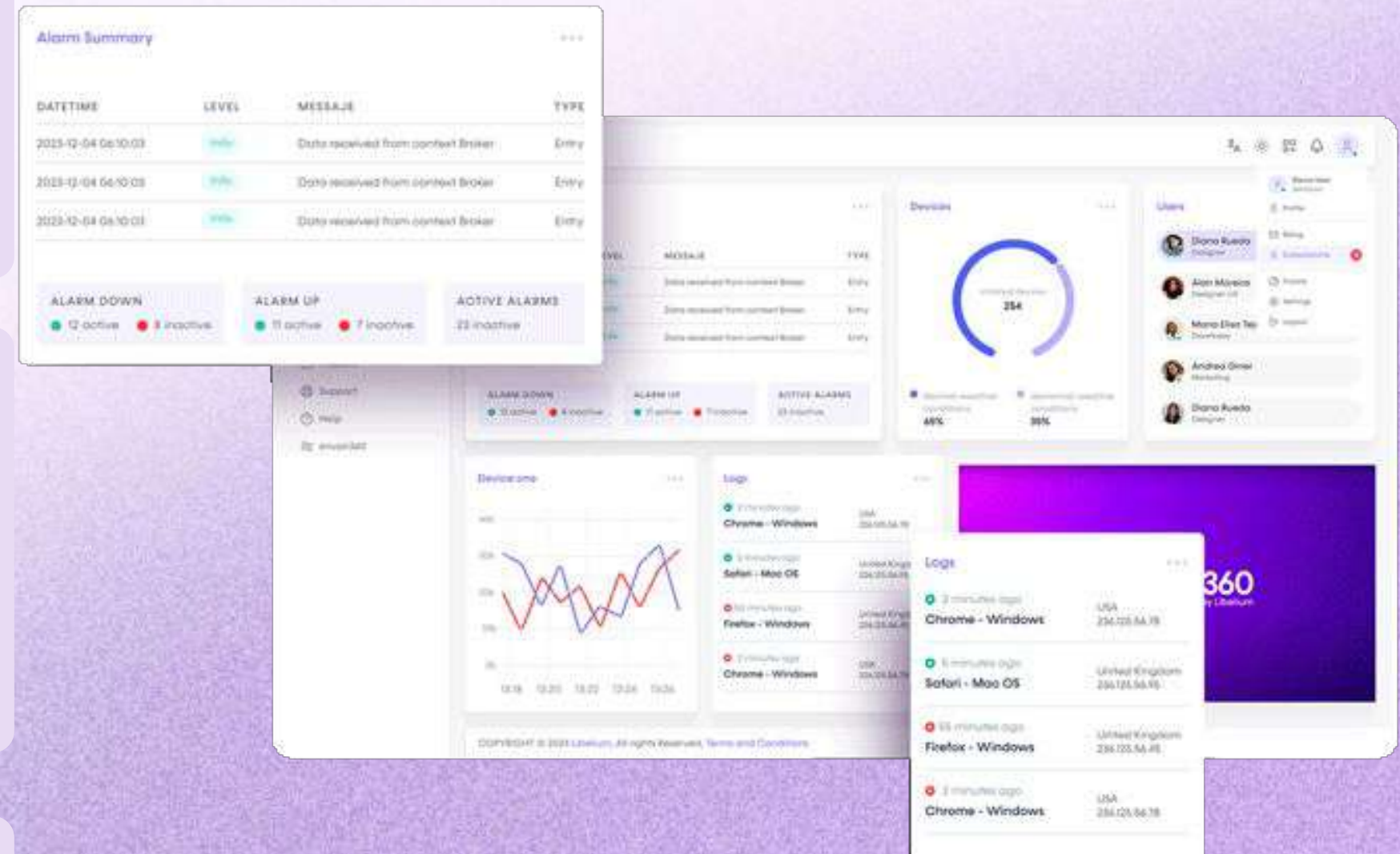
Aimed at improving air quality and **national equivalents**, a series of data quality criteria are established, as well as air quality indicators and limits for the different pollutants.

Audited action plans



INFORMED DECISIONS IN URBAN DEVELOPMENT

Action plans based on contextual analysis and prediction models.





Cómo jugar en el
tablero de la

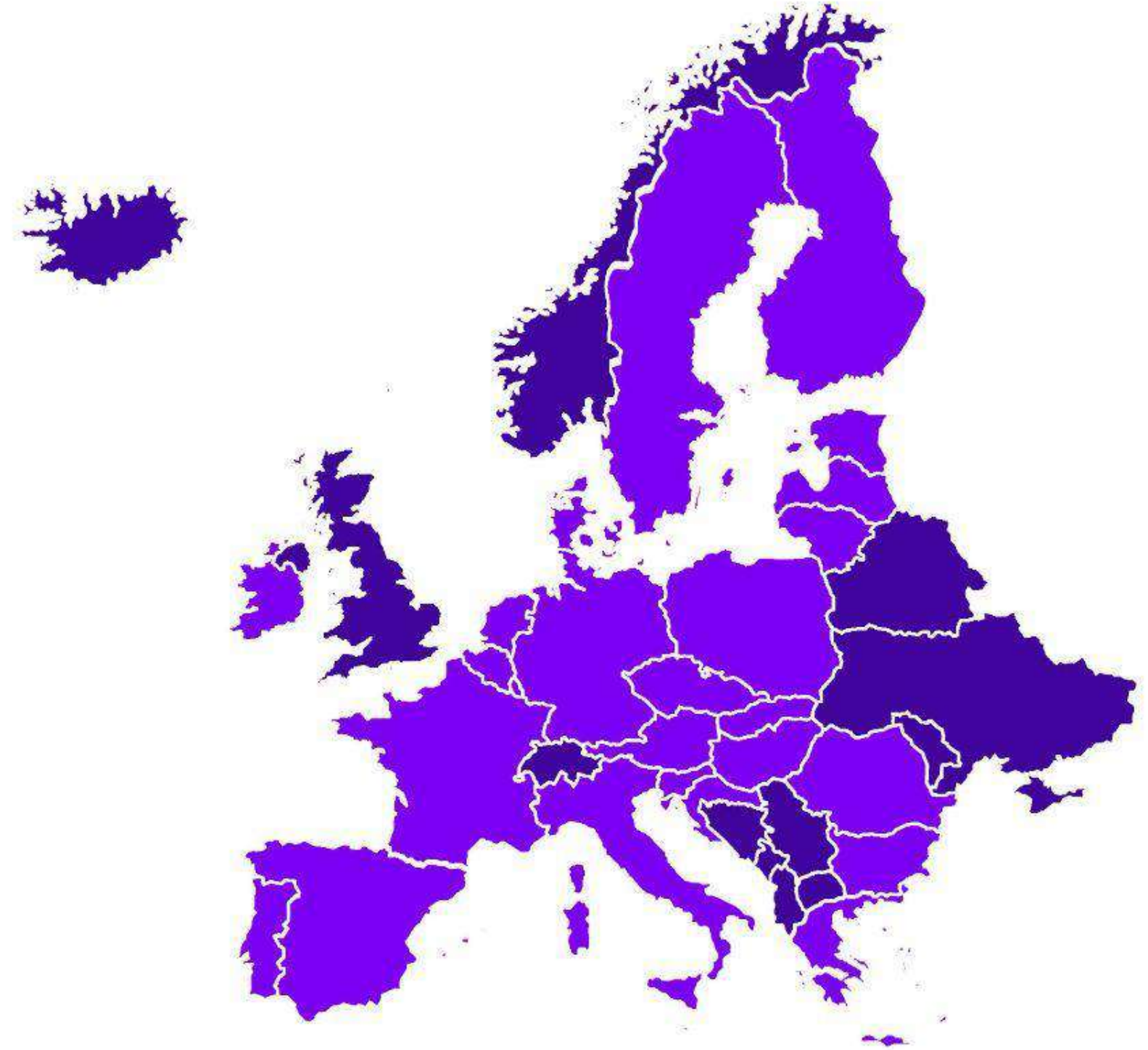
Espacios de Datos



Un mercado único de datos

La UE está creando un mercado único de datos en el que:

- los datos puedan circular dentro de la UE y entre sectores, en beneficio de todos
- se respeten plenamente las normas europeas, en particular las relativas a la privacidad y la protección de datos, así como la legislación sobre competencia
- las normas de acceso y uso de los datos sean justas, prácticas y claras



El valor de la economía de datos (EU27)

2018



€301 billion
(2.4% of EU GDP)

2025

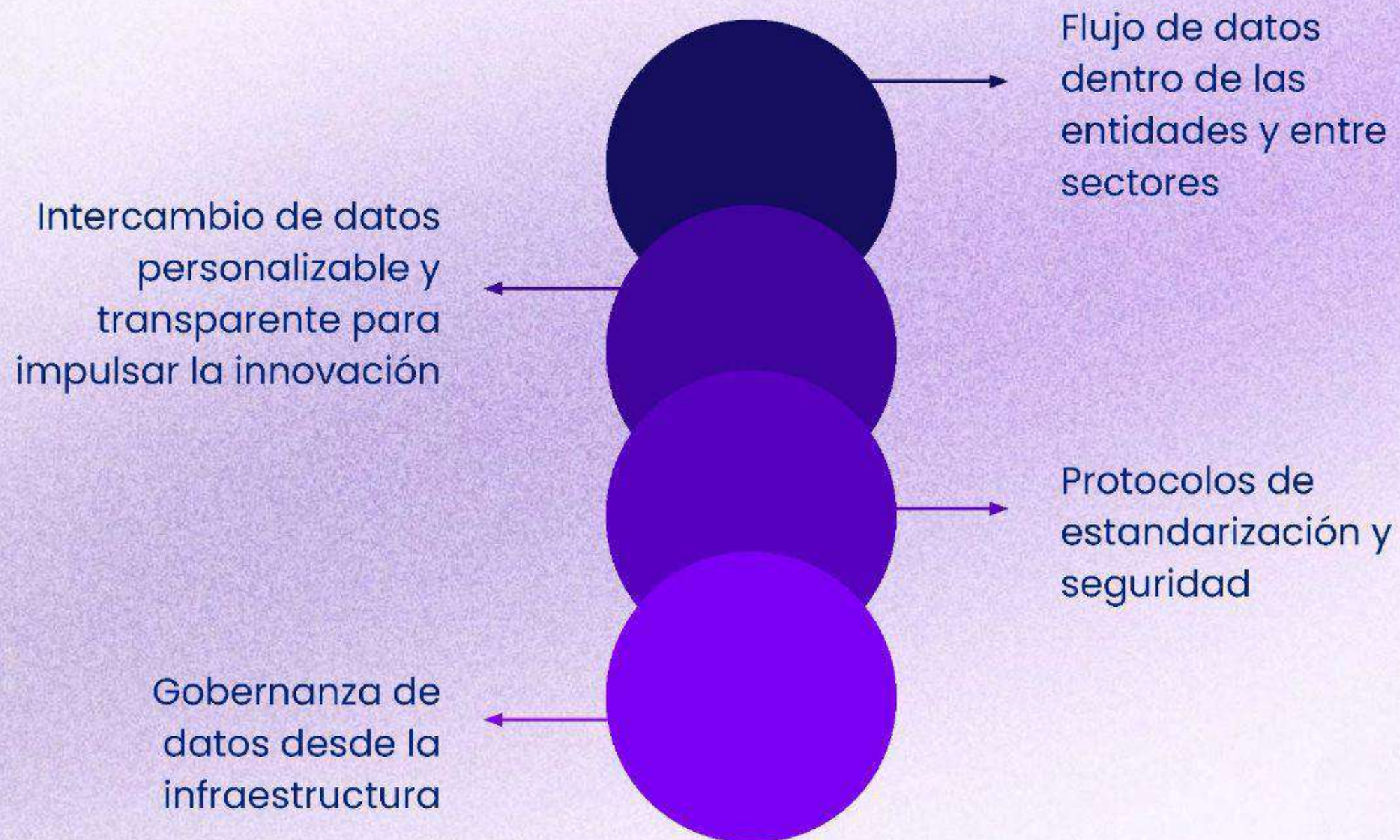
2.8x



€829 billion
(5.8% of EU GDP)

Estrategia europea de datos

Un espacio común europeo de datos, un mercado único de datos



Leader in Data Spaces and LDT

**Data**

Helping cities to generate data with data spaces and IoT:

- CitCom.ai
- Beopen
- i3 Market

**Artificial Intelligence (AI)**

Building algorithms to boost EU innovation:

- Local Digital Twin (LDT) toolbox
- DOME Marketplace

**Visualization**

Transforming data into UX visualization for easy understanding and interaction:

- Citiverse

**Use Cases**

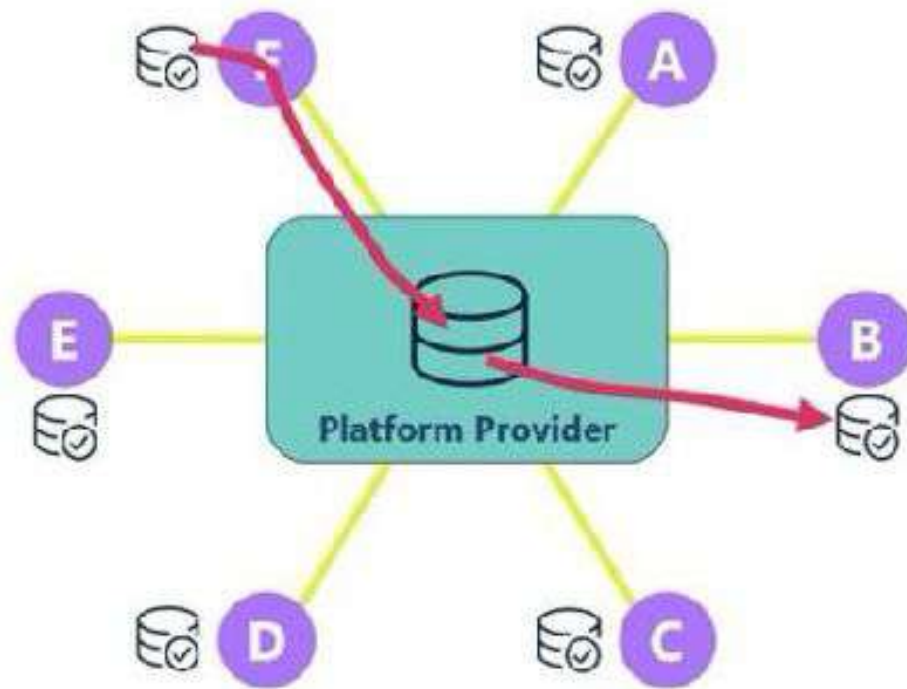
Solving real problems with data

- DeployTour

MORE USE CASES TO COME:

- EU Data Spaces Mobility
- EU Data Spaces Green Deal
- EU Data Spaces Agrifood

Data Platform

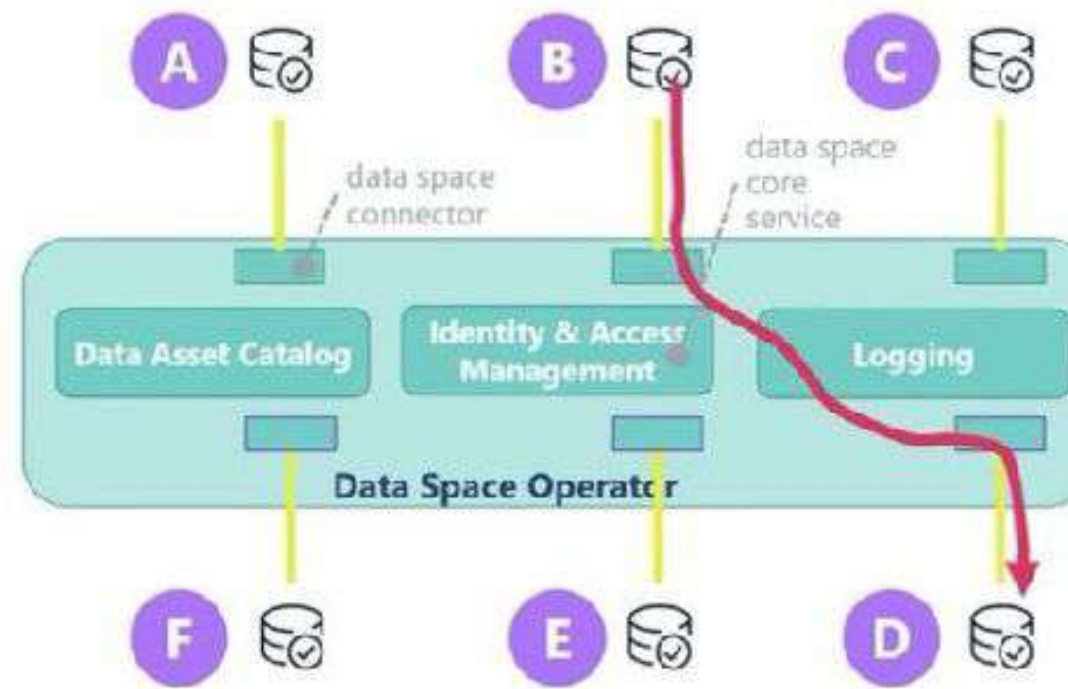


lead concepts:

«API»

A **(product) platform** is a set of elements (components, roles, processes, relationships, and interfaces) with a uniform architecture serving an organization as the basis for products and services for different customers.

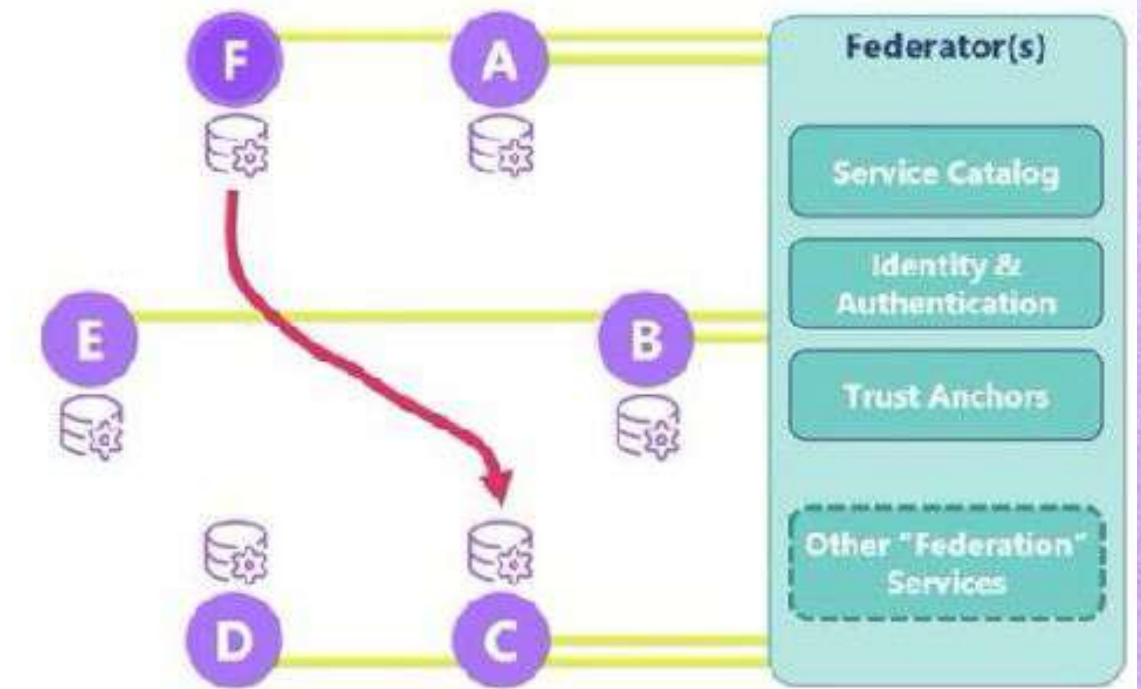
Data Space



«data asset»

A **data space** is a coordinated set of (i) technical standards, (ii) organizational policies, and (iii) core services under a (iv) specified governance model to enable and facilitate data exchange between its participants.

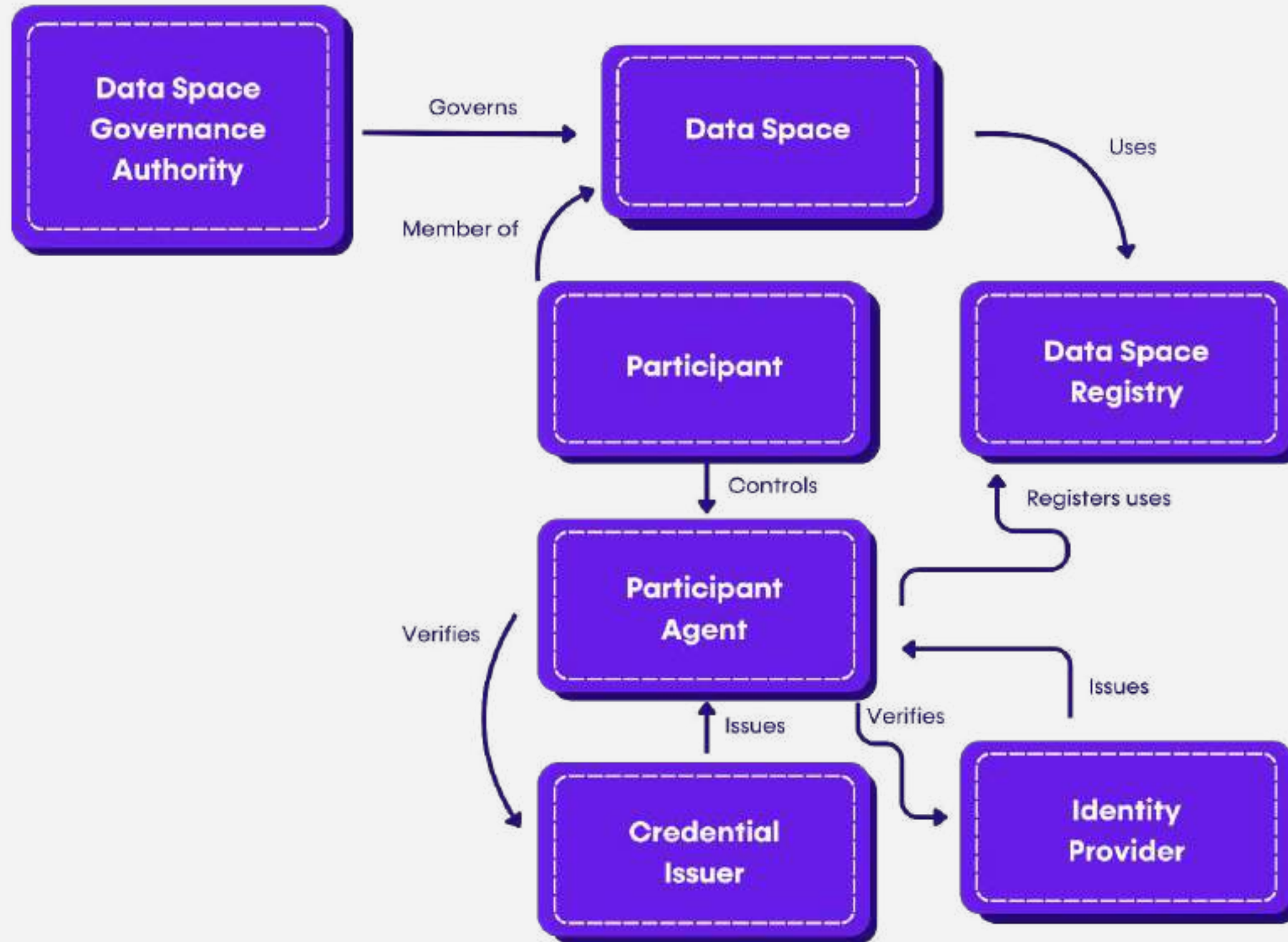
(Data) Ecosystem



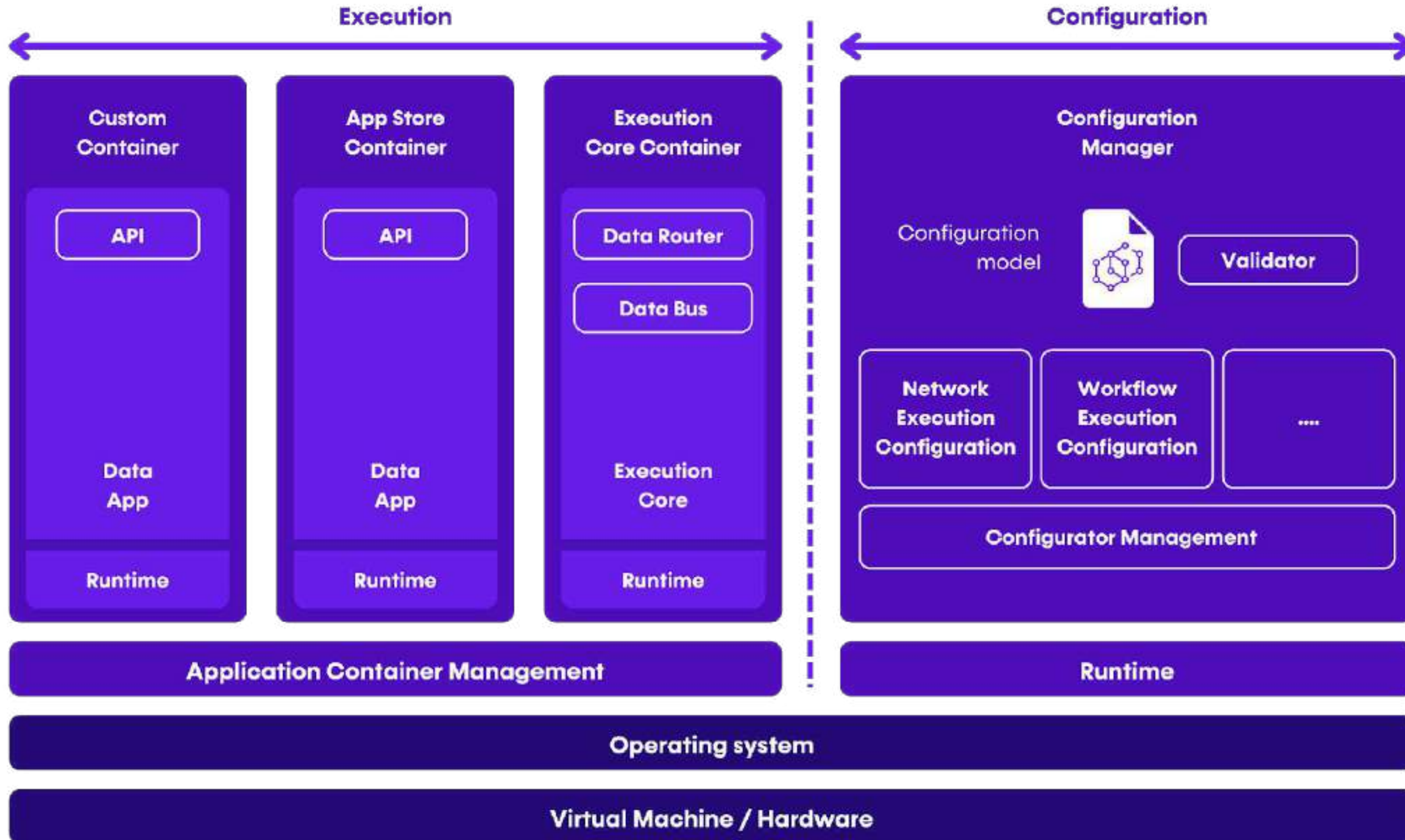
«service»

An **ecosystem** is the alignment structure of the multilateral set of partners that need to interact in order for a focal value proposition to materialize.

data warehouse (DWH) • data lake • data lake house • cloud data warehouse • data mesh • data hub • industry platform • one/two-sided platforms



Entorno Data Space Conector



Iris360 Convergence

No limits! Just data!

Headquarters

Avda. María Zambrano 31
WTCZ, Torre Este Planta 7
50018 Zaragoza

Libelium Murcia

Urban Center, Nelva 1, Planta B-18
30006 Murcia

Factory

Calle Gutenberg, 9-11
50015, Zaragoza

Libelium Lab

Calle Luis Buñuel, 6
30562 Ceutí, Murcia

